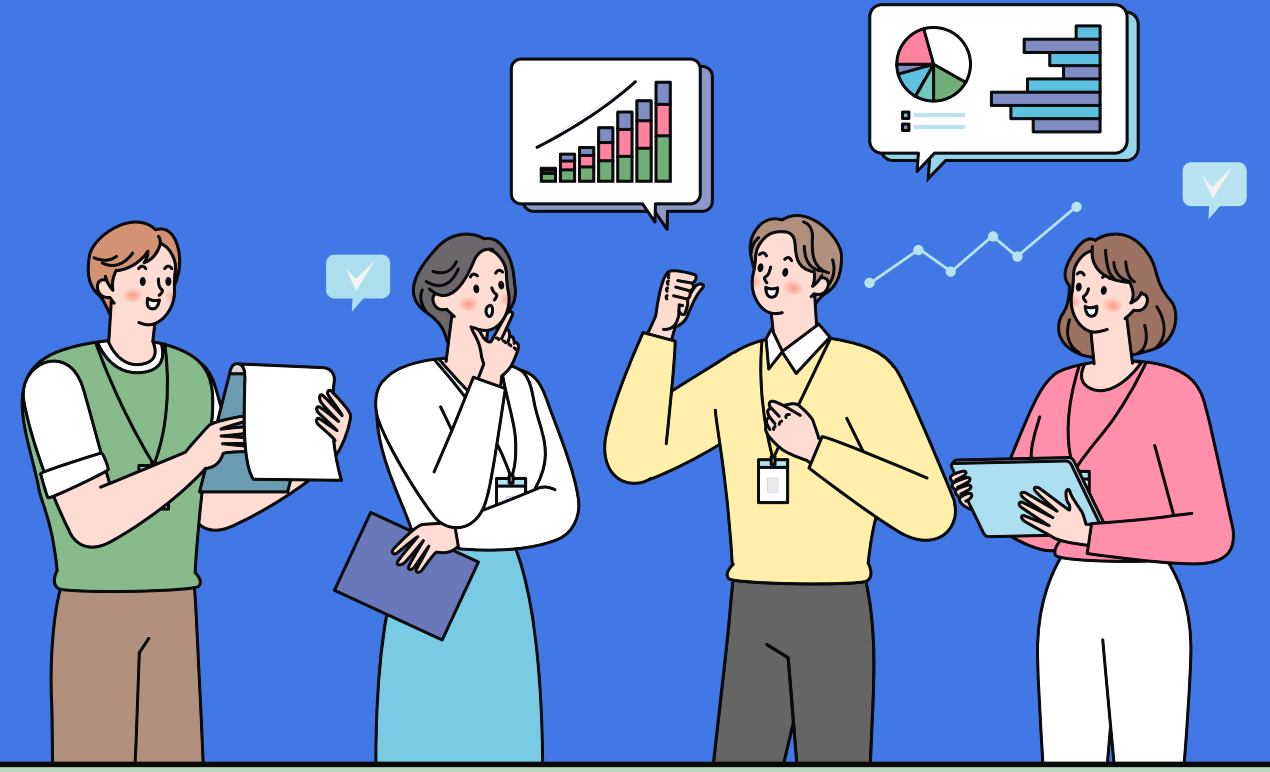


Long-Term Invitation Training Programs (2026)



Program Overview

The Long-term Invitation Training Program provides Indonesian professionals with an opportunity to gain hands-on experience in Korea's maritime and offshore plant service industries.

- **Program Structure:** 3 months (90 days) of company-based internship training in Korea, providing participants with practical work experience and exposure to industry practices in the maritime and offshore plant service sectors.
- **Number of Participants:** 5 participants
- **Target Participants:** Professionals engaged in offshore and maritime-related industries, as well as individuals seeking to enhance their expertise and understanding of the offshore plant service industry.
- **Expected Outcomes**
 - Enhanced practical competencies
 - Expanded professional networks
 - Valuable international industry experience

Internship Partner Companies

SEBO TECHNOLOGY



SME Est. 1994 | Busan, Gangseo-gu
http://www.sebotc.com/SEBO_TECH/

Shipbuilding Components & Offshore Wind
 Specialist manufacturer of shipbuilding equipment and offshore wind systems. Over 30 years of expertise in fabricating marine components with strong engineering and quality control capabilities.

Dept: Design & Technical Sales
 CAD drafting & document control · Product spec management · International quotation handling

positions: 2 **Employment Linkage Available**

Industrial accident insurance available (under review)

SKY OFFSHORE



SME Est. 2016 | Busan, Gangseo-gu
<https://www.sky-offshore.com/>

Offshore Plant Construction & Inspection
 Specialized in offshore plant construction, quality inspection, and technical service solutions. Provides 4-stage structured internship from safety training through final evaluation.

Dept: Technical Service Solutions
 Hull construction & outfitting · QA/QC inspection · Commissioning & site supervision

positions: 1 **Employment Linkage Available**

Accommodation provided (studio) | Insurance coverage planned

KOSTEC



SME Est. 2009 | Busan, Sasang-gu
<http://kostec-co.com/>

Naval Design, Shipbuilding & Consulting
 Provides integrated services in ship design, construction management, equipment export, and shipyard consulting. Has existing Indonesia business experience for direct project linkage.

Dept: Design & Technical Sales
 Indonesia sales support · Ship design execution · Technical documentation & consulting

positions: 1 **Employment Linkage Available**

Indonesia business experience | Hiring actively considered

NEWGEN I&S



SME Est. 2015 | Busan, Haeundae-gu
<https://www.onenewgen.com/>

AI · Digital Twin for Marine & Offshore
 Cutting-edge AI and Digital Twin solutions provider for shipbuilding, offshore, and plant industries. Work alongside engineers building next-generation maritime intelligence systems.

Dept: Software Development
 Offshore plant AI development · Generative AI data refinement · Digital Twin prototype work

positions: 1 **Possible (20% threshold)**

Meal support provided | Hiring possible (20% conversion rate)

Benefits and Financial Support



Airfare

Round-trip airfare



Insurance Fees



Living Allowance

KRW 1,200,000 per month



Accommodation & Meals

University dormitory accommodation is provided (Korea Maritime & Ocean University)

Program Schedule

	Description	Schedule
1	Program Promotion & Recruitment	June 2026
2	Application Deadline	June 24, 2026
3	Announcement of Selected Participants	June 26, 2026
4	Departure Date / Program Start	July 30 / July 31, 2026
5	Program Finish / Return Date	October 27 / October 28, 2026

* The above schedule is subject to change

"This program is supported and funded by the Ministry of Oceans and Fisheries (MOF), Republic of Korea."

For more information or inquiries, please contact the KIORCC Email: alia@kiorcc.org, cheol2da@kmou.ac.kr